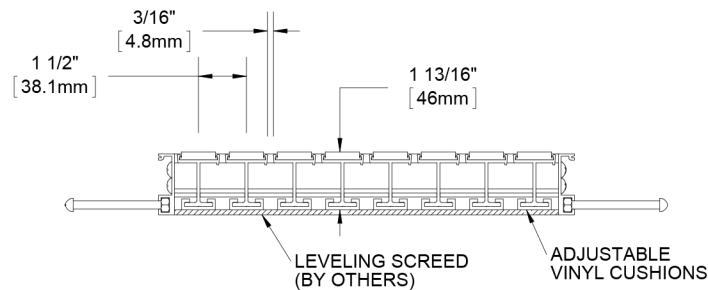
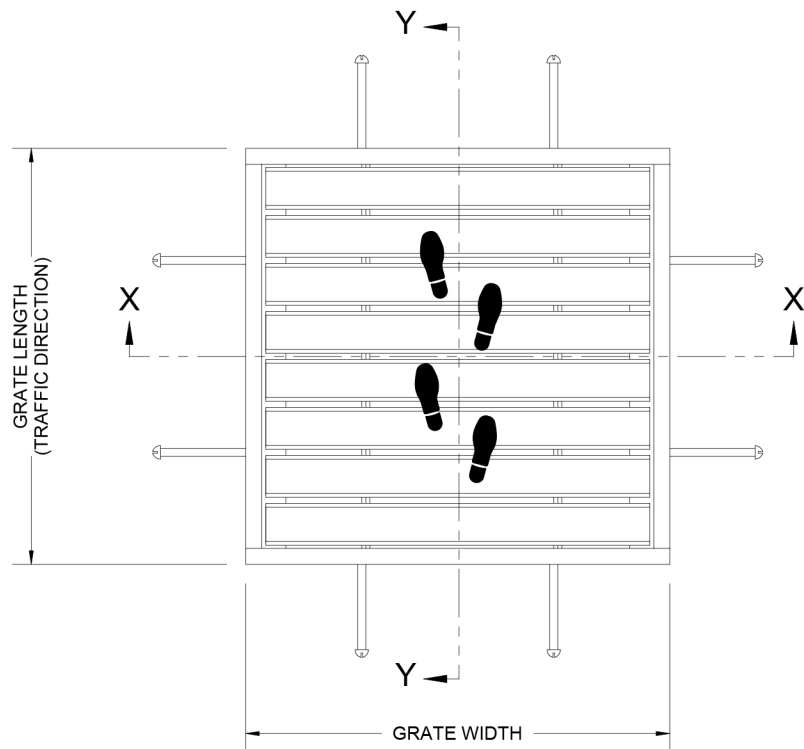
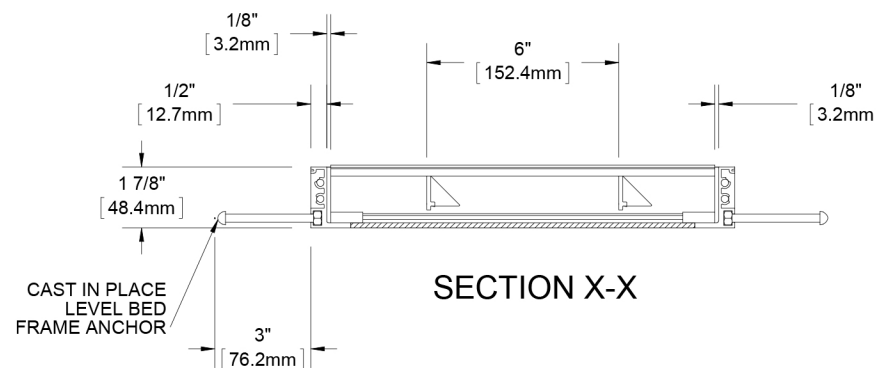




- \*BGD74P PREMIUM CARPET INSERT
- \*BGD74R RUGGED SCRUB INSERT
- \*BGD74V VINYL INSERT
- \*BGD74E ECOTREAD INSERT
- \*BGD74U RIBBED RUBBER INSERT
- BGD74G VINYL ABRASIVE INSERT
- BGD74X Poured ABRASIVE
- \*BGD74A SERRATED ALUMINUM
- \*BGD74B BRUSH INSERT



SECTION Y-Y



SECTION X-X

**NOTES:**

- STANDARD MAXIMUM SECTION SIZE OF GRATE WIDTH NOT TO EXCEED 8'-0", CUSTOM SECTIONING AVAILABLE
- FRAME ANCHOR SPACING: 6" FROM CORNERS, 24" MAX
- VERIFY TRAFFIC DIRECTION AND THAT SECTIONING DOES NOT OCCUR IN A TRAFFIC LANE
- ALL RAIL COMPONENTS ARE MADE OF 6063-T6 ALUMINUM ALLOY, ALL FRAME COMPONENTS ARE MADE OF 6063-T5 ALUMINUM ALLOY. KEYLOCKS ARE MADE WITH 6061-T6 ALUMINUM ALLOY
- TREAD RAILS MUST RUN PERPENDICULAR TO TRAFFIC DIRECTION
- TRAFFIC DIRECTION DIMENSION CAN ONLY BE CHANGE IN 1 1/2" (38.1 MM) INCREMENTS UNLESS OPTIONAL ALUMINUM FILLER IS INCLUDED
- GRATE DIMENSION ALLOWS FOR CLEARANCE BETWEEN GRATE SECTIONS AND FRAMES IN THE WIDTH DIMENSION

**DESCRIPTION:**

GRATEdesign® 1 3/4" Aluminum Grate with Cast-In, Level Bed, Aluminum, Frame

BGD74-FLBC

SCALE: NTS

F-1

\* AVAILABLE IN ALTERNATING TREADS