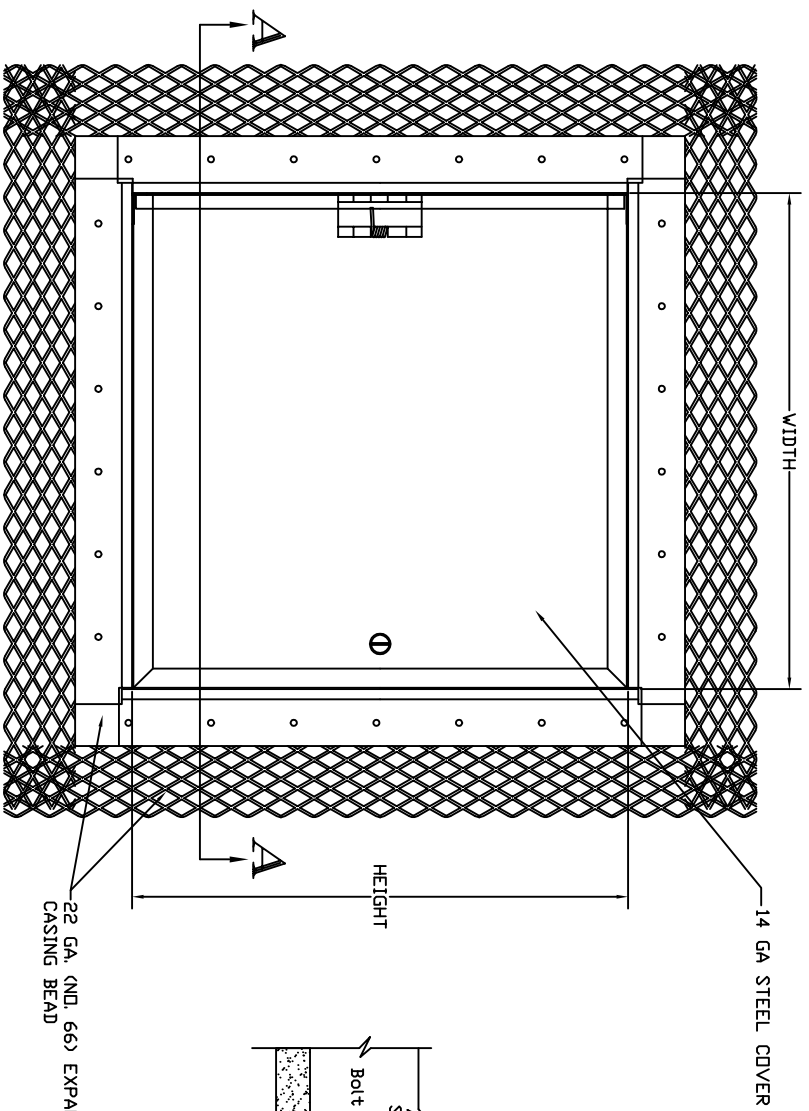
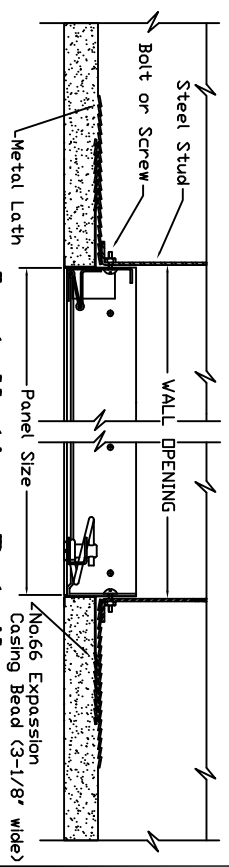


NOTE: FINISH- ONE COAT BAKED ON ENAMEL POWDER COATED FINISH

* CAM LOCK (CENTERED) AT TOP AND BOTTOM OF PANEL, BALANCE OF CAM LOCKS ON SIDE OPPOSITE HINGES



STANDARD SIZES and PRODUCT NUMBERS					
DOOR SIZE	WALL OPENING	PRODUCT NO. STYLE K	No. OF CAMS	No. OF HINGES	
8 x 8	8 1/4 x 8 1/4	3200-010	1	1	
8 x 12	8 1/4 x 12 1/4	3200-012	1	1	
12 x 12	12 1/4 x 12 1/4	3200-014	1	1	
12 x 16	12 1/4 x 16 1/4	3200-016	1	2	
12 x 18	12 1/4 x 18 1/4	3200-018	1	2	
12 x 24	12 1/4 x 24 1/4	3200-019	2	2	
16 x 16	16 1/4 x 16 1/4	3200-020	1	2	
16 x 20	16 1/4 x 20 1/4	3200-022	1	2	
18 x 18	18 1/4 x 18 1/4	3200-024	1	2	
20 x 24	20 1/4 x 24 1/4	3200-026	4 *	2	
20 x 30	20 1/4 x 30 1/4	3200-028	5 *	3	
24 x 24	24 1/4 x 24 1/4	3200-030	4 *	2	
24 x 30	24 1/4 x 30 1/4	3200-032	5 *	3	
24 x 36	24 1/4 x 36 1/4	3200-034	5 *	3	



Installation Detail

K ACCESS DOOR

MATERIAL SCHEDULE

QUANTITY	SIZE	COVER	FRAME

MICOR

COMMERCIAL PRODUCTS GROUP
484 Thomas Drive
Bensenville, IL, 60106
800 624-8642 (fax) 630-766-5259

STANDARD FLUSH DOOR for
PLASTER WALLS or CEILINGS

DEALER _____

PROJECT _____

LOCATION _____

ARCH. _____

CONT'D _____

DATE _____ DRAWN _____

REV _____ JOB NO. _____

NR13\MIL\CDR\KACCESS SHEET