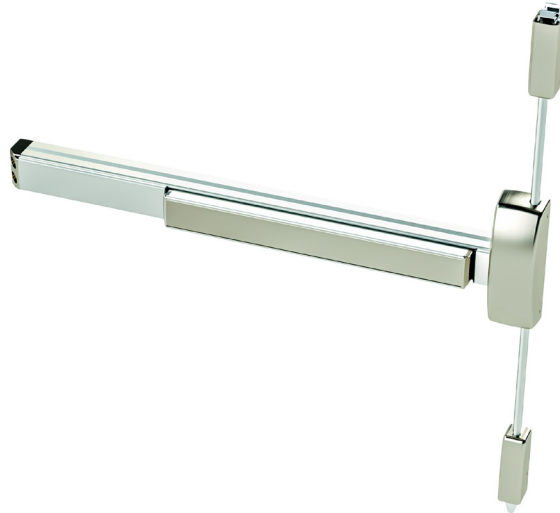


6300V Series

Commercial Wide Stile Surface Vertical Rod Exit Device

Architectural Submittal Sheet



Specifications

Rail	• Extruded aluminum • Specify 630F for full stainless surfaces (roll formed)
Latch	• Top - Stainless Steel 3/4" toggle • Bottom - 5/8" Travel Drop Bolt • Less bottom rod option
Hand	• Device is non-handed • Trim is non-handed or field reversible
Dogging	• Hex key dogging standard • Cylinder dogging optional • Dogging not available for fire labeled devices
Minimum Stile Width	• 6300 - 3-1/2" • 6400 - 3 1/8" with 639027/639057 strike and 2 1/8" on aluminum frames with balde stop strike.
Door Thickness	• 1-3/4" - 2" (Consult factory for other)
Door Width	• 24", 36", 48" standard
Door Height	• Panic - Up to 10' • Fire - See fire ratings charts page 4
Strike	• Cast top strike, plate bottom strike
Finishes	• 605 - Polished Brass, 606 - Satin Brass, 613 - Dark Bronze, 622 - Flat Black, 626 - Satin Chrome, 630 - Satin Stainless Steel, 630F - Full Satin Stainless Surfaces • Optional Anti-Microbial Coating available on 626, 630 & 630F
Fasteners	• Includes machine screws and wood screws • SNB Optional
Warranty	• Ten (10) year limited warranty
Electrified Options	• Motorized Latch Retraction • Request to Exit/Signal Switch • Alarmed Exit • Latch Bolt Monitor • ISMC Connectors
Certifications: Compliances: Listings:	• Listed for UL 305 "Panic", listed for UL 10C "Fire Exit Hardware" up to 3 hours. • ANSI/BHMA A156.3 Grade 1 • Complies with ADA (Americans with Disabilities Act) and ICC/ANSI 117.1 for Accessible and Usable Buildings • FL #40297 +50/-50 psf 8080 18ga Pair • Meets requirements of the BAA as a COTS product manufactured in the United States